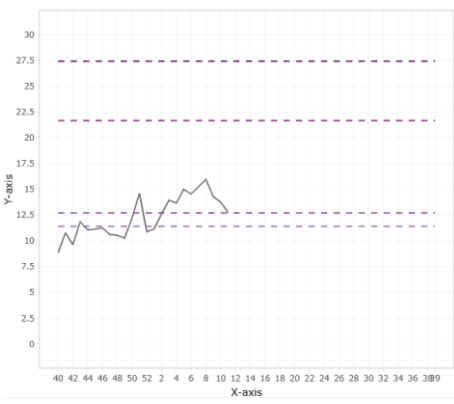


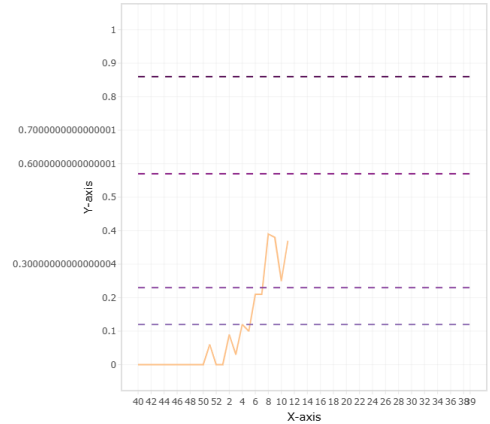
- 1) Number of consultations of acute respiratory infection in medical centers. More than 800 medical centers report on number of ARI on weekly basis. Starting week 2, the figures were exceeding the epidemic threshold, with increase starting week 2 and decrease starting week 8. The figure shows moderate transmissibility activity.
- 2) Positivity % of influenza from severe acute respiratory infection (SARI) sentinel surveillance network. Five hospitals are included. The patient enrollment is based on SARI case definition with data collection and Influenza testing at the National Influenza Center. For the weeks 1 to 11, positivity was increasing and exceeded the epidemic threshold starting week 4. The figure is showing also moderate activity.
- 3) Number Hospital admissions for respiratory infections covered by MOPH: The data is extracted from the MOPH database. Target patients are those with ICD10 codes for respiratory infections. For the weeks 1 to 11, the figures were above the epidemic threshold, reaching high activity at week 6 and week 9.

Graphs – The thresholds are computed based on historical data

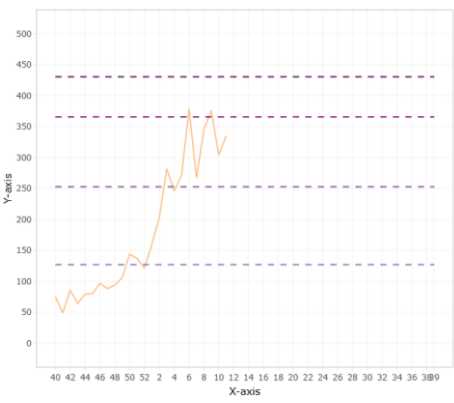
Medical Center: Acute Respiratory Infection count by week



Severe Acute Respiratory Infection Sentinel Surveillance: Positivity for Influenza testing



Hospital admissions covered by MOPH for respiratory infection count by week



Assessment of indicators

	2024												2025											
Season 2024/2025	40	41	42	43	44	45	46	47	48	49	50	51	52	1	2	3	4	5	6	7	8	9	10	11
Transmissibility (ARI)	Low	Low	Low	Low	Low	Low	Low	Low	Low	Low	Low	Low	Low	Low	Low	Low	Low	Low	Low	Low	Low	Low	Low	Low
Seriousness (visa)	Low	Low	Low	Low	Low	Low	Low	Low	Low	Low	Low	Low	Low	Low	Low	Low	Low	Low	Low	High	High	High	High	High
Morbidity (sari)	Low	Low	Low	Low	Low	Low	Low	Low	Low	Low	Low	Low	Low	Low	Low	Low	Low	Low	Low	Low	Low	Low	Low	Low

Low
Moderate
High
Extraordinary