

PRIMARY HEALTH CARE DEPARTMENT *Annual Dashboard - 2018.*

*"Primary Health Care is a RIGHT for ALL
NO Discrimination against Nationality , Race , Authenticity or
Religion."*

SERVICES PROVIDED BY THE PHC CENTERS:

MANAGEMENT (SCREENING – TREATMENT) OF:



Non Communicable diseases
Acute Malnutrition
Mental Health Conditions

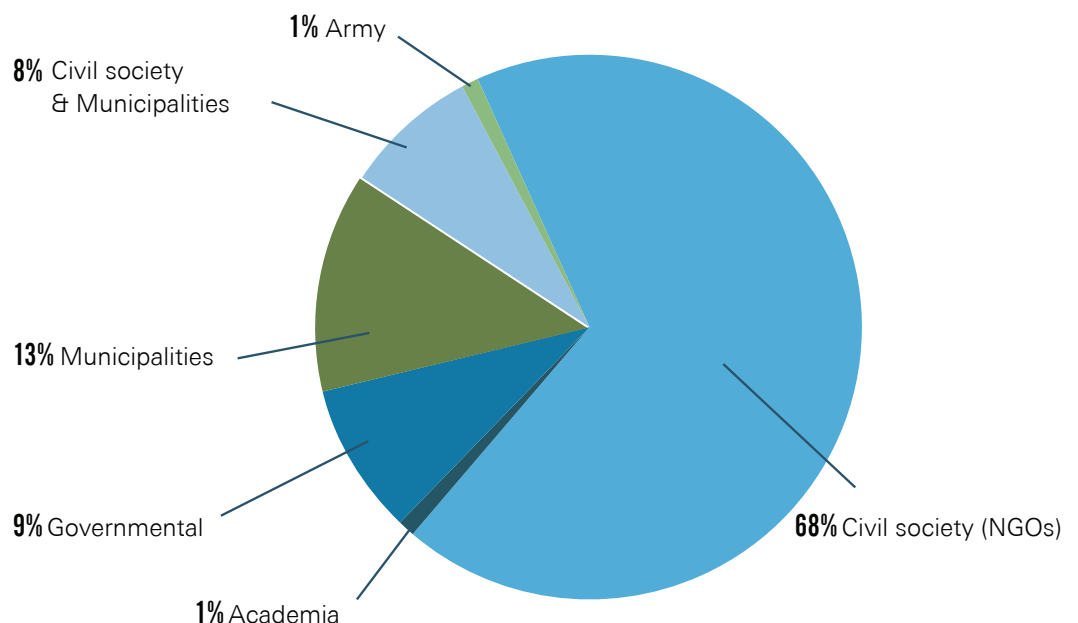
PROVISION OF:



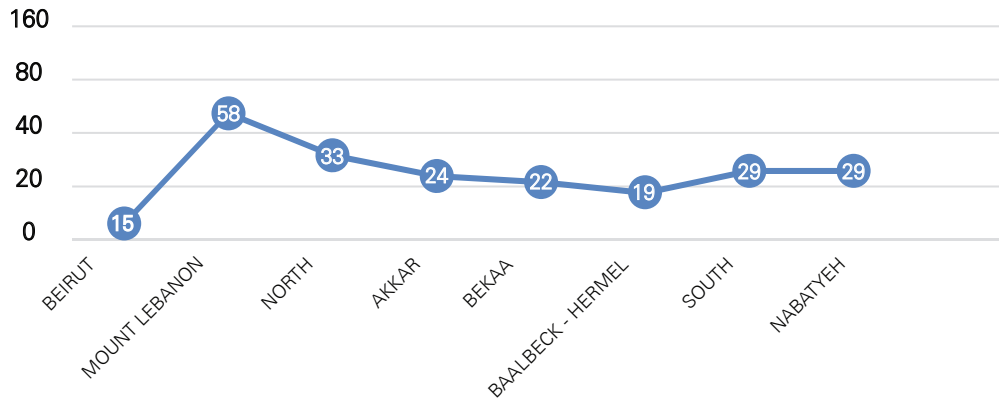
Immunization services
Reproductive health services
Essential drugs
Oral health services
Health education and promotion

PHC NETWORK:

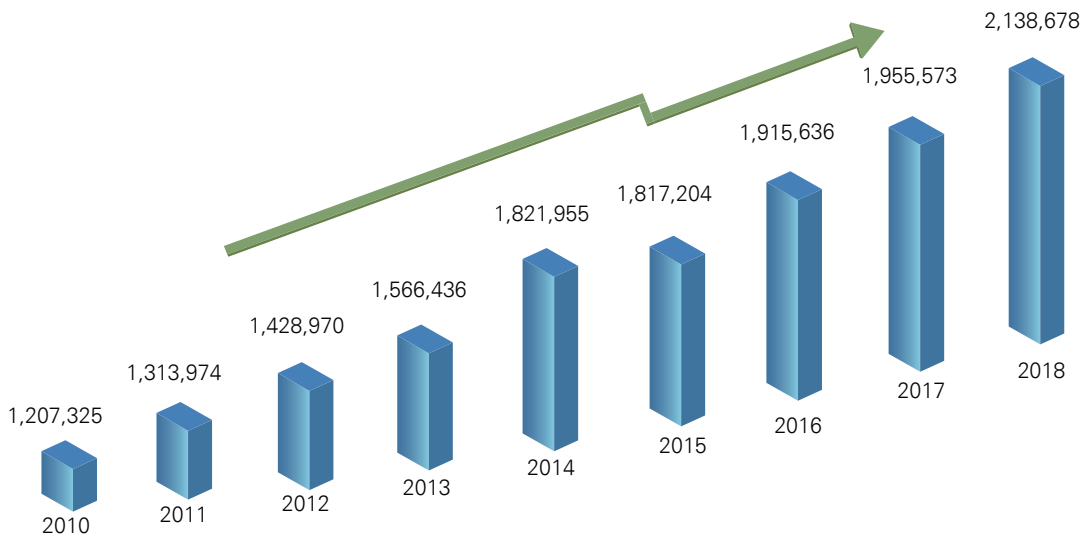
229



PHCC GEOGRAPHICAL DISTRIBUTION:



PHCC UTILIZATION:



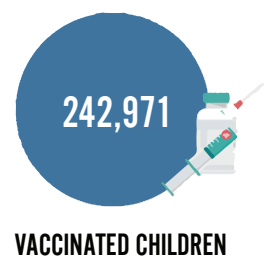
PROGRAMS:

A- NATIONAL EXPANDED PROGRAM ON IMMUNIZATION (EPI) EPI'S ACHIEVEMENTS



- National Immunization coverage > 92 %
- Continue vaccinating displaced children at the 4 borders and 4 UNHCR centers.
- Collaboration with the Lebanese society of paediatrician (private sector) to provide them with MOPH - EPI vaccines to reach every child

ACCELERATED IMMUNIZATION ACTIVITIES (AIA)



B- ACCREDITATION PROGRAM:



229 PHCCS

104

PHCCs currently enrolled in the accreditation process



52 MOCK SURVEY



52 ACCREDITED

ACCREDITATION ACTIVITIES

23 Actual Survey visits were conducted by Lebanese national surveyors

35 PHCCS received their accreditation certificate



Capacity building for **41** health workers in PHCCS on **Quality Management and Accreditation Standards**, and for **27** health workers on **Medication Reconciliation**.

C- EMERGENCY PRIMARY HEALTHCARE RESTORATION PROJECT (EHPRP)

121,548
BENEFICIARIES
ARE ENROLLED IN THE PROJECT

101,454
BENEFICIARIES
RECEIVED THEIR FIRST HEALTHCARE SERVICE



75/75 PHCCS
ARE CONTRACTED BY THE PROJECT

>90%
USERS SATISFIED

SERVICES: 

1- CHRONIC MEDICATION



185,231
Beneficiaries

262,105
Prescriptions

2- ORAL HEALTH



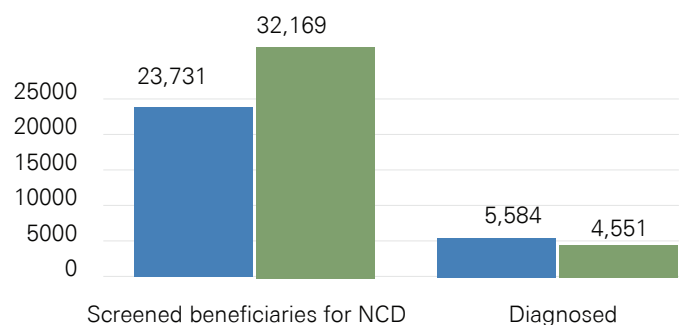
144,474
Beneficiaries

176,698
Oral & dental care services

3- NCD



204 PHCC Implementing the NCD program



4- REPRODUCTIVE HEALTH



Beneficiaries within PHCC and Reproductive Health dispensaries.



103,870
Family Planning



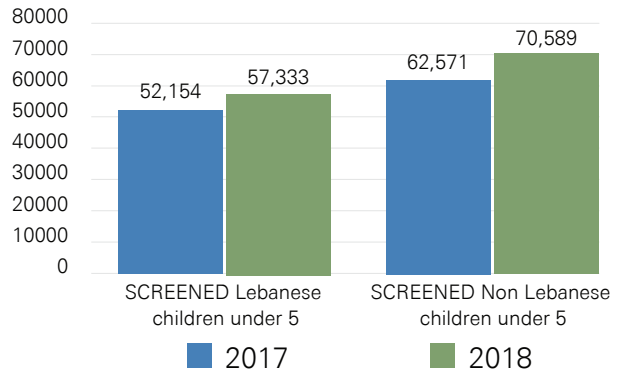
322,252
Reproductive Health

Paps smear Campaign Reaching More than **10,452 WOMEN**

5- ACUTE MALNUTRITION



26,099 pregnant and lactating women were screened in 2018 for acute malnutrition at PHCC



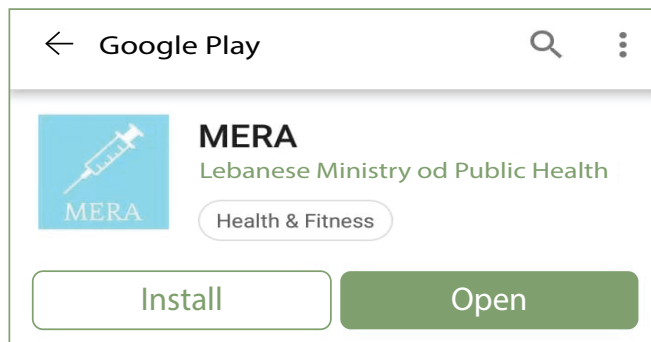
INNOVATION



E - IMMUNIZATION

- Development of E-IMMUNIZATION application.

NERA (MOBILE EPI REGISTRY APPLICATION)



- NERA is used:



To register and track vaccinated children in Lebanon and Follow up on their vaccination status

- This application is being utilized by :



Nurseries



Public Schools



Private Pediatrician Clinics



AIA outreach teams