

# ترصد الكوليرا في لبنان 16 أيار 2023

الجمهورية اللبنانية  
وزارة الصحة العامة  
برنامج الترصد الوبائي

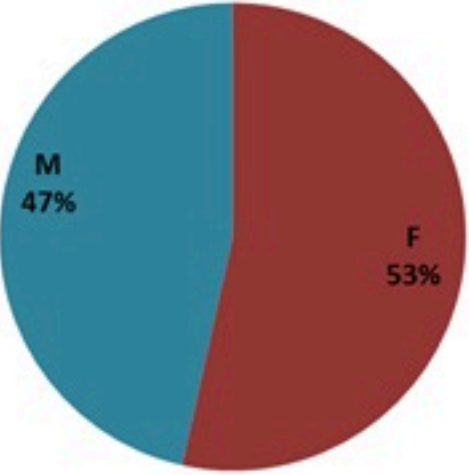


## الخطوط الساخنة

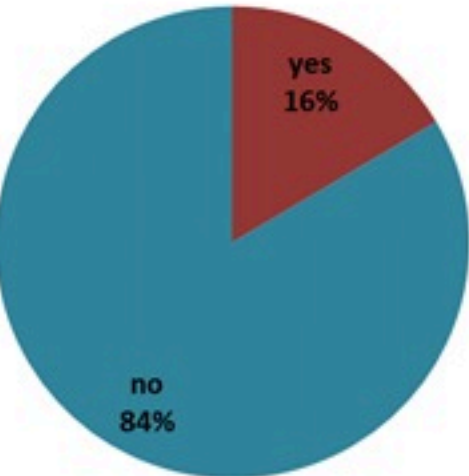
1760 (الصليب الأحمر)  
1787 (وزارة الصحة)

الوفيات (المتبنة)		الحالات المتبنة		كافة الحالات المتبنة والمتبنة	
التراكمي	الجديدة (آخر 24 ساعة)	التراكمي	الجديدة (آخر 24 ساعة)	التراكمي	الجديدة (آخر 24 ساعة)
23	0	671	0	7757	12

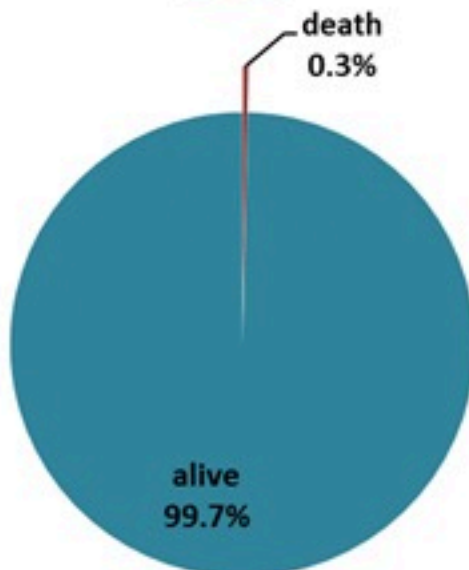
حسب الجنس  
(المتبنة والمتبنة)



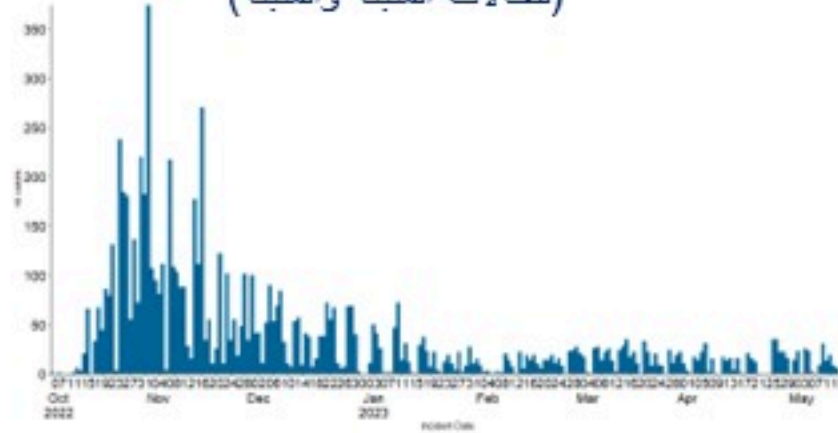
حسب الاستشفاء  
(المتبنة والمتبنة)



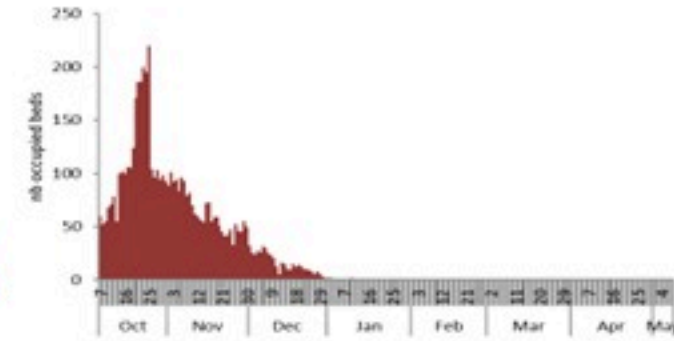
حسب تطور  
الحالة  
(المتبنة والمتبنة)



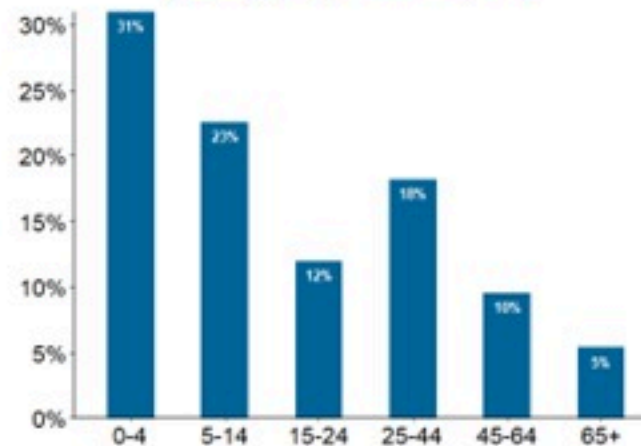
حسب تاريخ الإبلاغ  
(للحالات المتبنة والمتبنة)



استعمال الاسرة الاستشفائية  
(للحالات المتبنة والمتبنة)



حسب الفئة العمرية  
(للحالات المتبنة والمتبنة)



حسب البلدة  
(للحالات المتبنة)



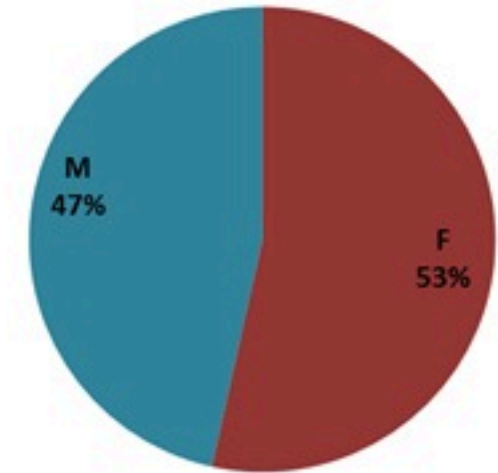
# Cholera Surveillance Report

## 16 May 2023

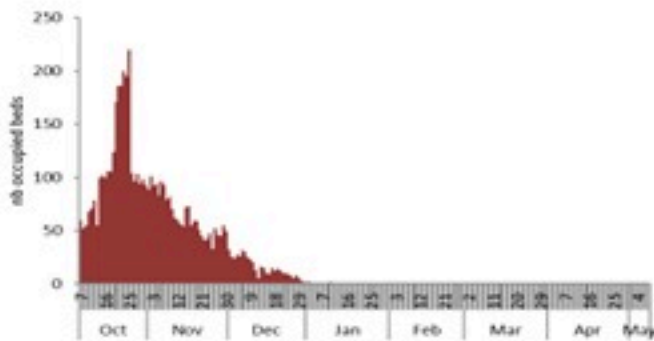
**Call Centers**  
 1760 (Red Cross)  
 1787 (MOPH)

All cases (suspected and confirmed)		Confirmed Cases		Deaths (confirmed)	
New (past 24 h)	Cumulative	New (past 24 h)	Cumulative	New	Cumulative
<b>12</b>	<b>7757</b>	<b>0</b>	<b>671</b>	<b>0</b>	<b>23</b>

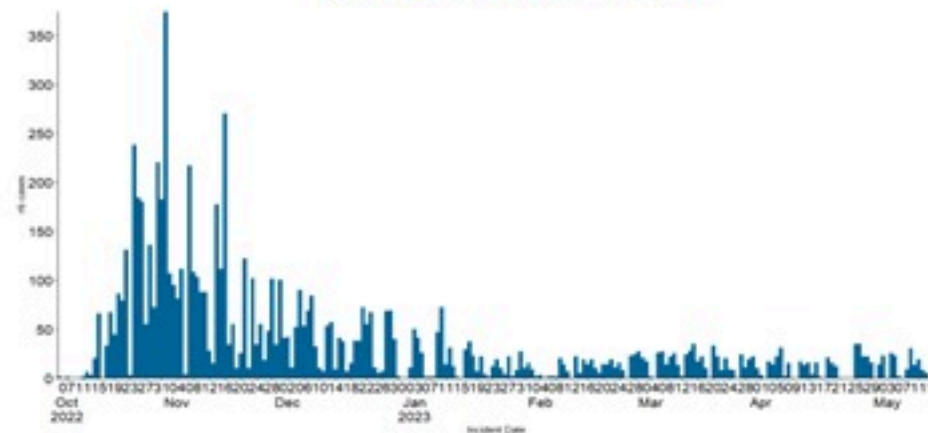
By Sex  
(suspected and confirmed)



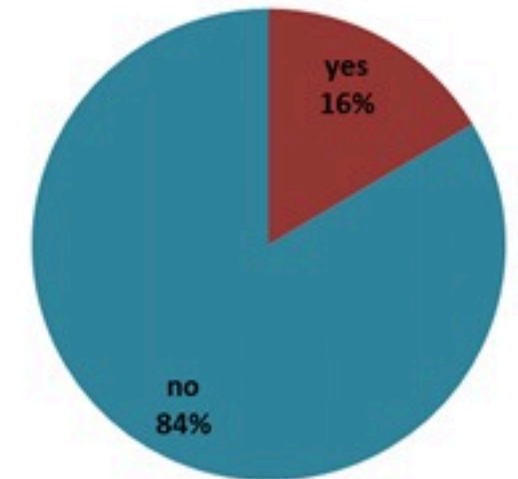
Occupied hospital beds  
(suspected and confirmed)



By date of report  
(suspected and confirmed)



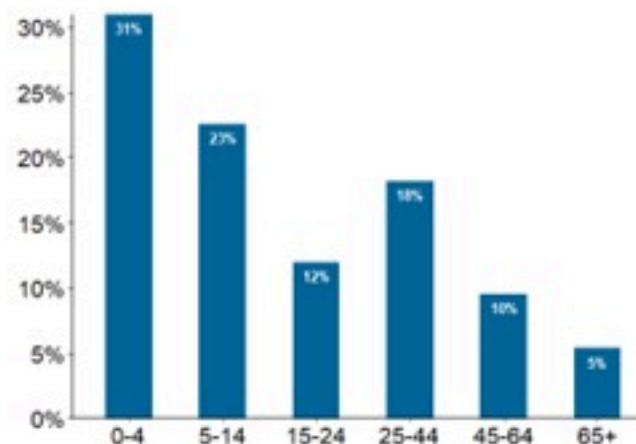
By Hospital Admission  
(suspected and confirmed)



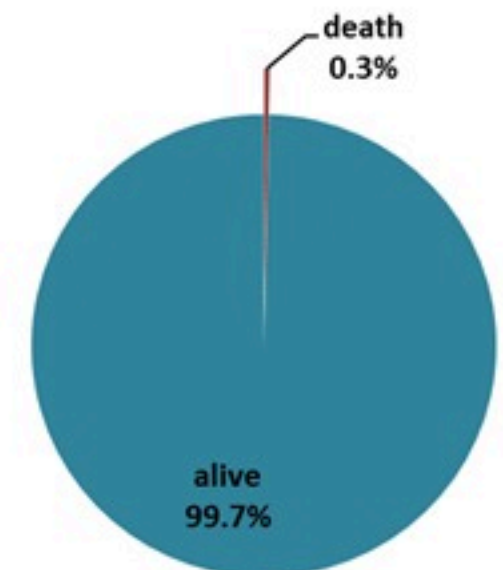
By locality (confirmed cases)



By age group  
(suspected and confirmed cases)



By Outcome  
(suspected and confirmed)

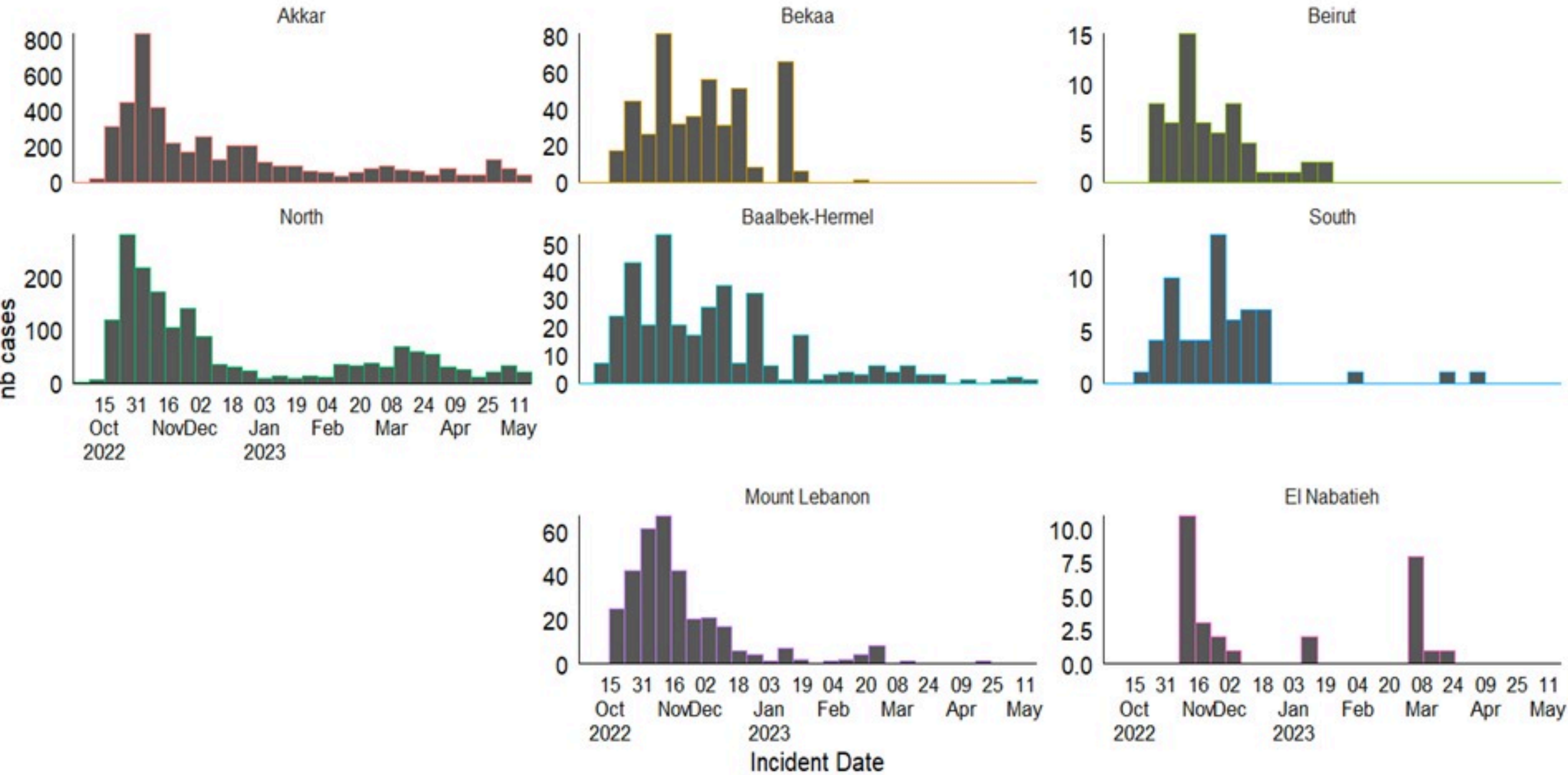




# Cholera Surveillance Report

## 16 May 2023

Epicurves by date of reporting by province  
(suspected and confirmed)

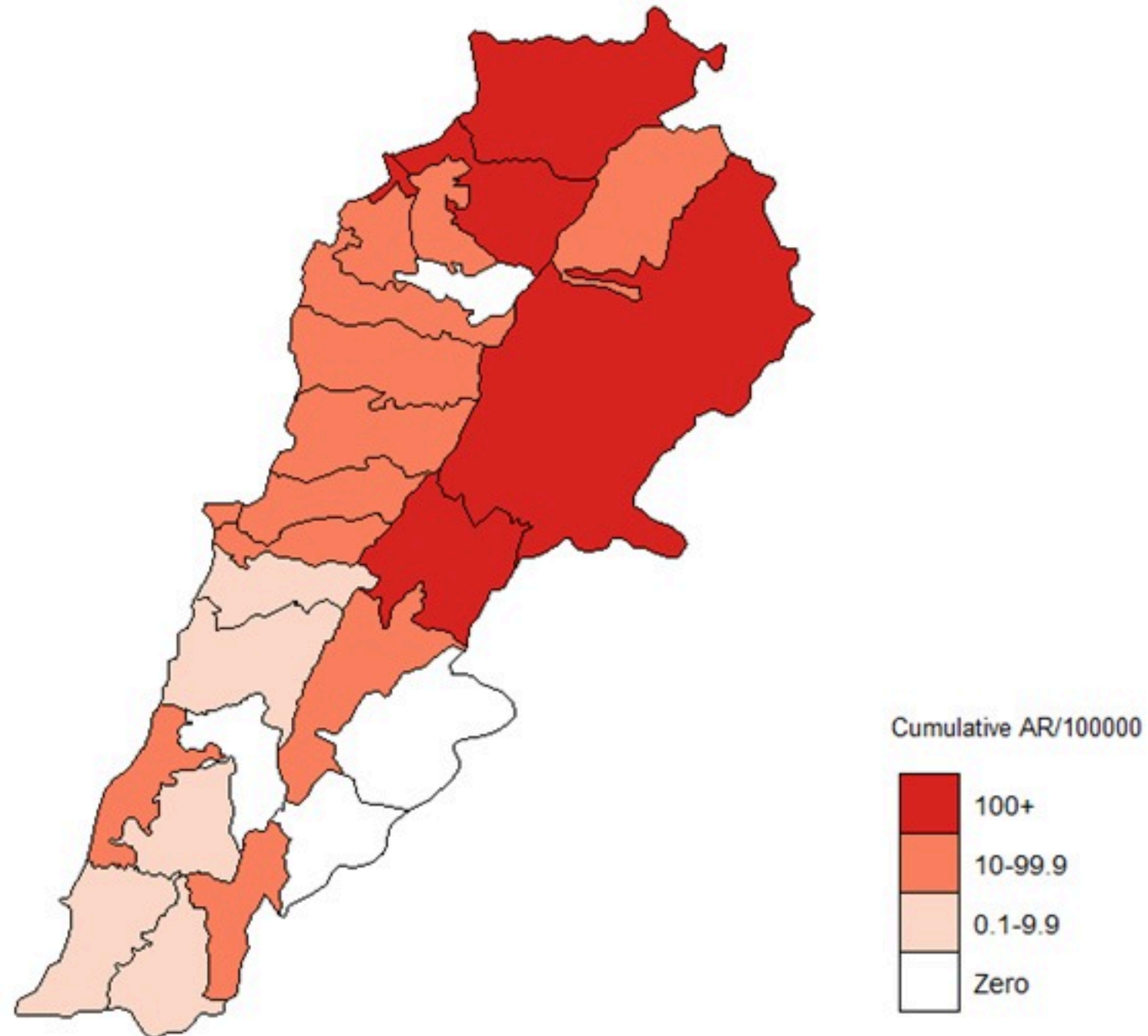


# Cholera Surveillance Update

## 16 May 2023

Cumulative Attack Rate per 100,000 (suspected and confirmed)

نسبة الحدوث التراكمية لكل مئة الف نسمة (الحالات المشتبهه والمثبتة)



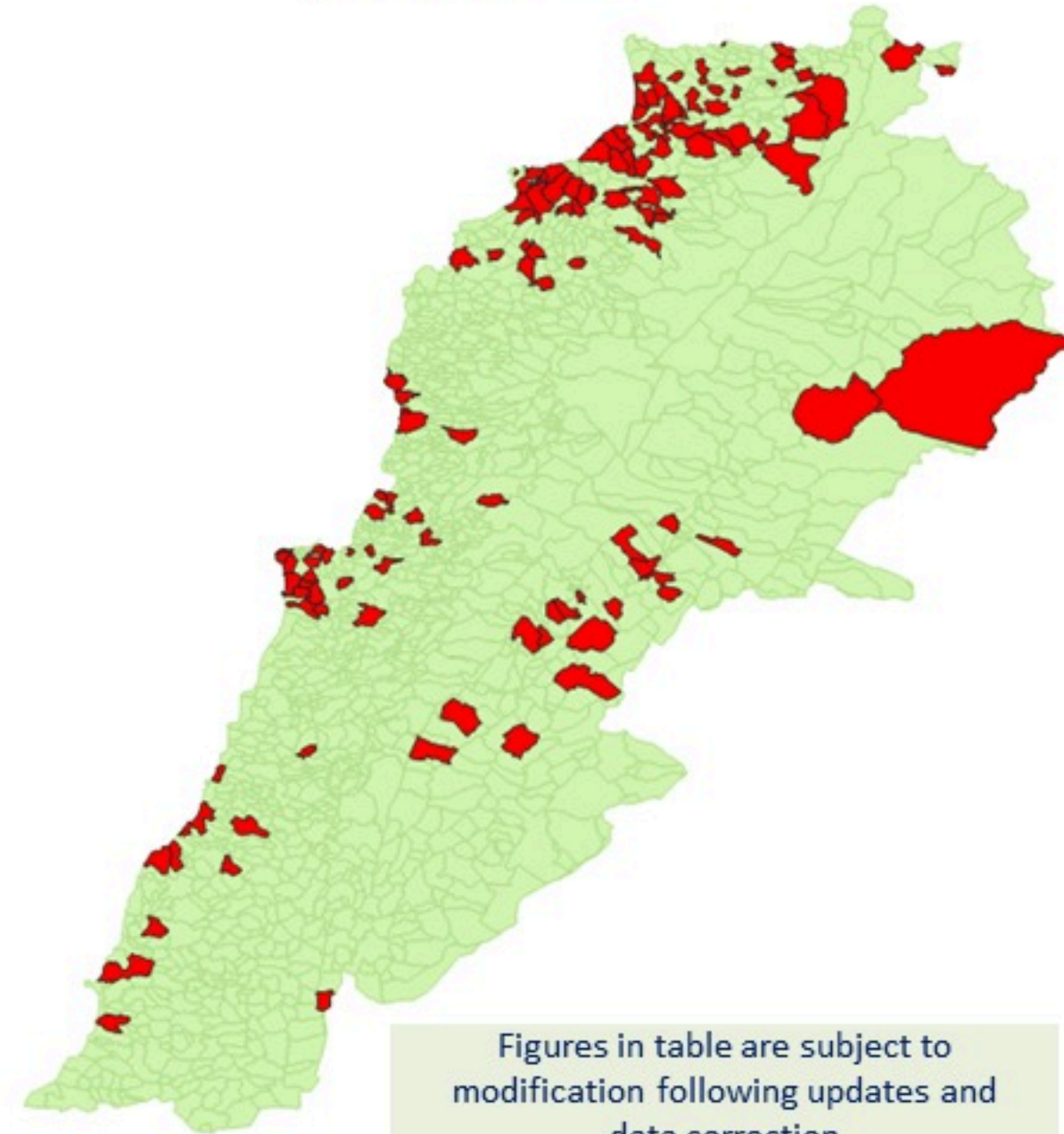


# Cholera Surveillance Update

## 16 May 2023

5

By locality (confirmed)  
حسب البلدة (المتبئة)



Figures in table are subject to modification following updates and data correction

Locality	cases	Locality	cases
Akkar		Kiswan	
Akkar Atika	1	Aintouna	1
Amayer/Duadi Khaled	1	Balfounh	1
Arqa / Marlayet Haddara	2	Bqajouta	7
Bebnine / Baddoua	161	Ghazir	2
Beit Hajj/Koucha/Khrebit Jindi	3	Jounieh Ghadir	4
Bergayel	5	Jounieh Seba	4
Bezbina	1	Yalchouch	1
Bireh	2	Zouk Mosbeh	3
Bqerzla	1	Kouna	
Cheikh Ayache / Chir Hmairine	1	Aaba	1
Dahr Qambar /Hokr Gatteh	3	Aahdiq	1
Dabadab	1	Bana	1
Dinbou	2	Bsama	1
Fneydek	1	Dahr Ain / Ras Masqou	1
Halba	1	Rachdibbine	1
Hayssa	1	Kfar Aqa	1
Hoeuich	3	Marjoun	
Ideldat Qaytee	3	Aadlyssah	1
Kfar Harra	4	Motin	
Kfar Melki	1	Biklaya	1
Khane Hayat	1	Broummana	1
Khirbet Char	2	Bsalim	1
Kneisset Hnaldar	1	Daruna/Borj Hammoud	2
Kouachra	1	Mansourieh	3
Koulikhat	2	Zalqa	1
Machha	2	Minieh Danieh	
Majdala	1	Aadoua	1
Memneaa	1	Assoun	4
Mhamarah / Nahr Bared / Abdeh	22	Ain El Tineh	1
Minlara	3	Bahsa	1
Mqyatea	1	Bakhaoum	4
Ouadi Jamous	11	Bhanine / Zouk Bhanine	7
Qaabrine / Tal Hayat	7	Btarmat	6
Qbalyat	1	Douniyya	1
Qlalyat Akkar	2	Kfar Chollane	2
Qobet Chamra	17	Kfar Habrou	1
Rahbeh	1	Mokubta	2
Ransiyeh / Deir Dalloum	1	Minieh	18
Saadine	4	Qualiyeh	1
Tell Abbas Charqui	2	Qattine	3
Tleil	1	Rihanieh	35
Zouq Haddara	1	Sir Daniieh	5
Zouq Hosnieh	3	Saïda	
Aley		Aanqoun	1
Aley	1	Bissatiyeh	4
Hay Selloum/Chouifat	1	Ghazieh	2
Baabda		Khawayb	3
Ain Roummaneh	1	Saïda	1
Borj Brajneh	3	Sawland	1
Ghbayreh/Chiyah/Sabra	2	Sour	
Hadath	3	Abbasiyeh	1
Haret Hreik	1	Deir Qanoun Ain	4
Kfar Chima	1	Badawi	16
Mrejijh	2	Mina	7
Baalbeck		Qobbah	21
Arsal	27	Tripoli Bab Raml	1
Kfar Dabache	2	Tripoli Gardans	2
Khodr	2	Tripoli Haddadine	1
Temnine Faouqa	1	Tripoli Nouri	1
Temnine Tahta	9	Tripoli Souayya / Issaïn	3
Younine	1	Tripoli Tabbaneh	21
Batroun		Tripoli Zeitoun	15
Beirut		West Beqaa	
Achrafieh	2	Kamel Jaruz	1
Ain Miralssah	1	Kulaya	1
Hamra	1	Saghbine	1
Mdsour / Mar Mikhael	1	Zahleh	
Msaitbeh	1	Aali Nahri	2
Chouf		Bar Elias	2
Ibail		Dalhameh	2
Amchit	2	Hazuch Mandra	1
Ehmej	1	Hawch Omara	7
Fidar	1	Majdal Anjar	1
Halate	1	Qob Elias	9
Ibail	1	Raait	11
Mastita	2	Saadnayil	11
		Taalabaya	2
		Zahleh Madaka	2
		Zghorta	
		Aalma	1
		Andeh	1
		Kfar Dhaqous	2
		Majdalya Zghorta	7
		Miriata / Faour	3
		Sebail	1
		Zghorta	5



# Cholera Surveillance Update

## 16 May 2023

Cholera weekly incidence rate/100,000

