

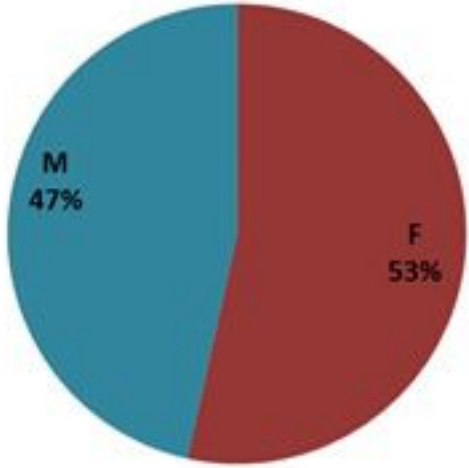
# ترصد الكوليرا في لبنان 3 أيار 2023

الجمهورية اللبنانية  
وزارة الصحة العامة  
برنامج الترصد الوبائي



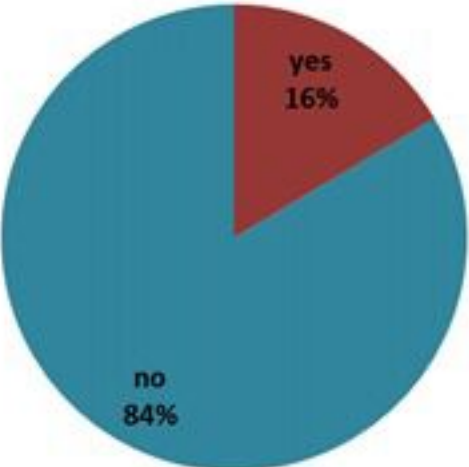
## الخطوط الساخنة

1760 (الصليب الأحمر)  
1787 (وزارة الصحة)



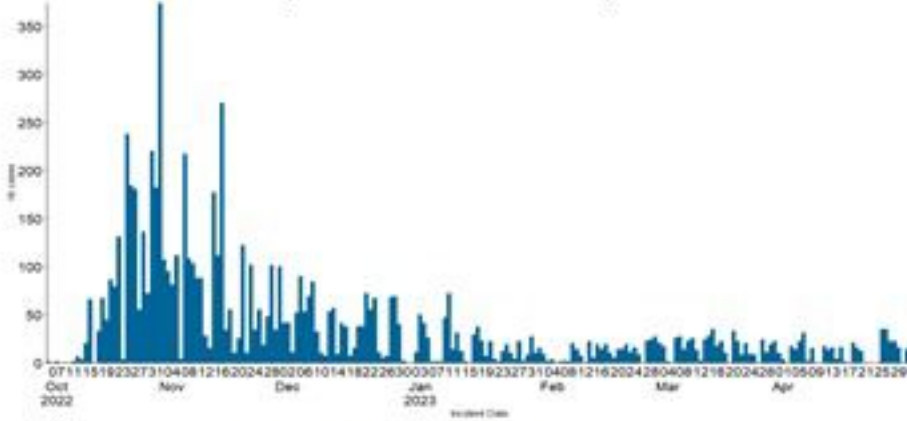
حسب الجنس  
(المشبهة والمتبنة)

الوفيات (المتبنة)		الحالات المتبنة		كافة الحالات المشبهة والمتبنة	
التراكمي	الجديدة (آخر 24 ساعة)	التراكمي	الجديدة (آخر 24 ساعة)	التراكمي	الجديدة (آخر 24 ساعة)
7604	23	671	0	7604	23

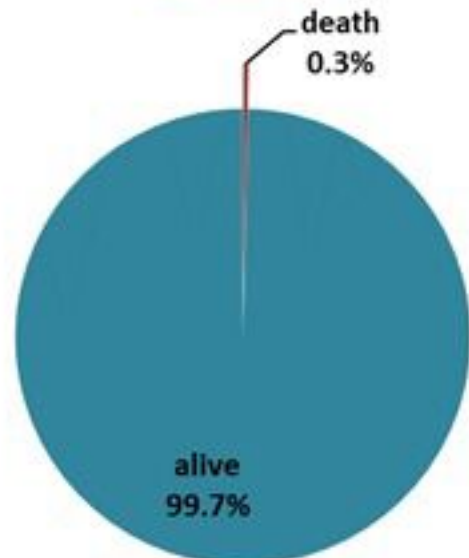
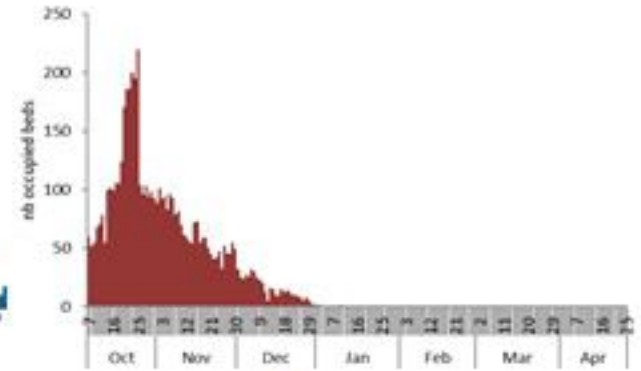


حسب الاستشفاء  
(المشبهة والمتبنة)

حسب تاريخ الإبلاغ  
(للحالات المتبنة والمتبنة)

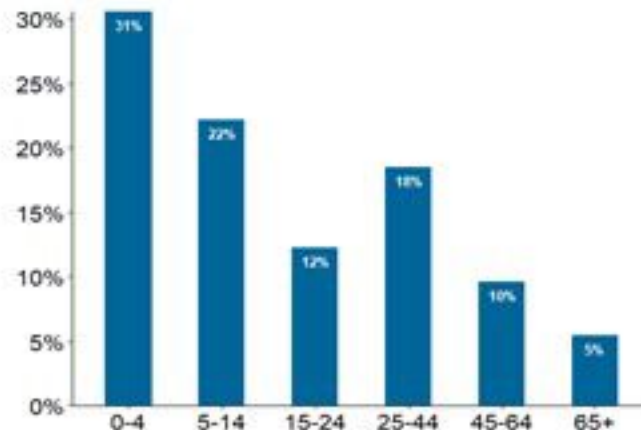


استعمال الاسره الاستشفائية  
(للحالات المتبنة والمتبنة)



حسب تطور  
الحالة  
(المشبهة والمتبنة)

حسب الفئة العمرية  
(للحالات المتبنة والمتبنة)



حسب البلده  
(للحالات المتبنة)



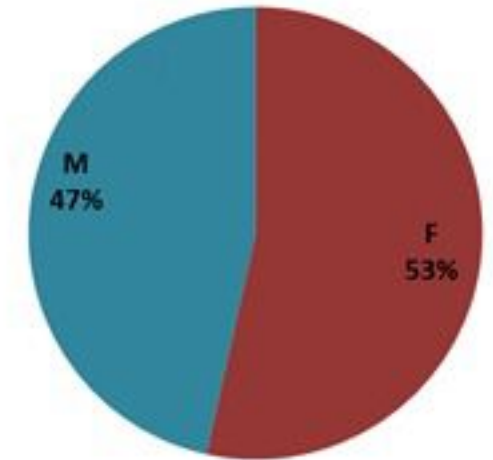
# Cholera Surveillance Report

## 3 May 2023

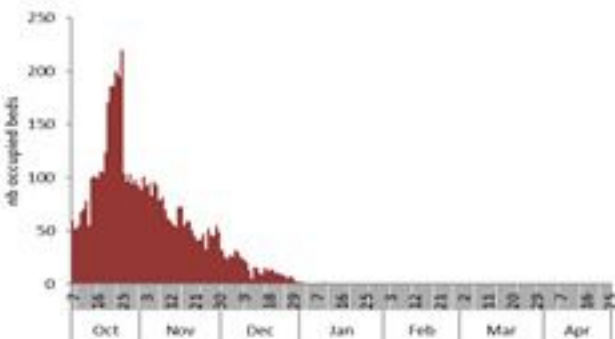
**Call Centers**  
 1760 (Red Cross)  
 1787 (MOPH)

All cases (suspected and confirmed)		Confirmed Cases		Deaths (confirmed)	
New (past 24 h)	Cumulative	New (past 24 h)	Cumulative	New	Cumulative
<b>23</b>	<b>7604</b>	<b>0</b>	<b>671</b>	<b>0</b>	<b>23</b>

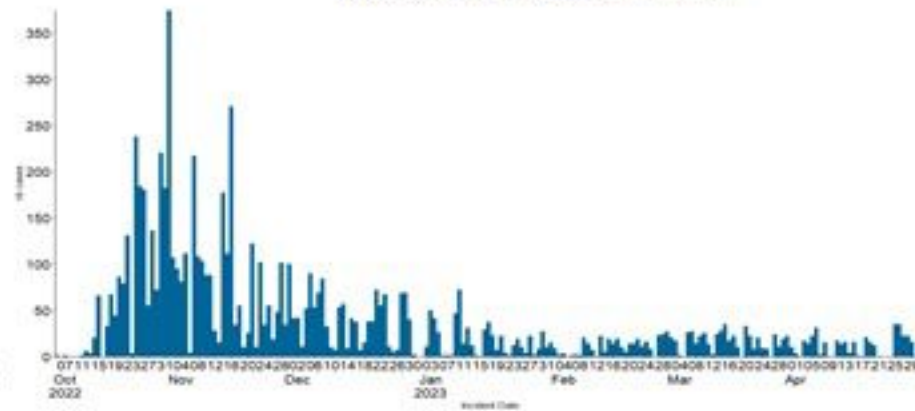
By Sex  
(suspected and confirmed)



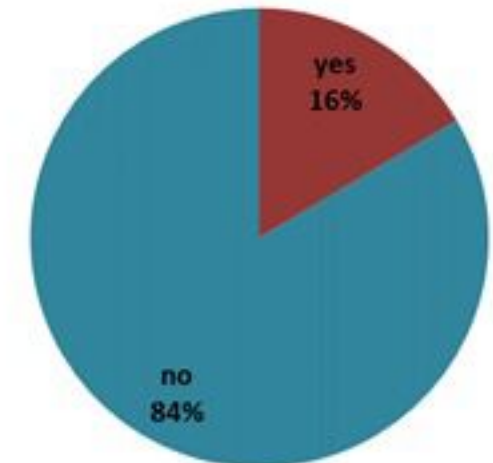
Occupied hospital beds  
(suspected and confirmed)



By date of report  
(suspected and confirmed)



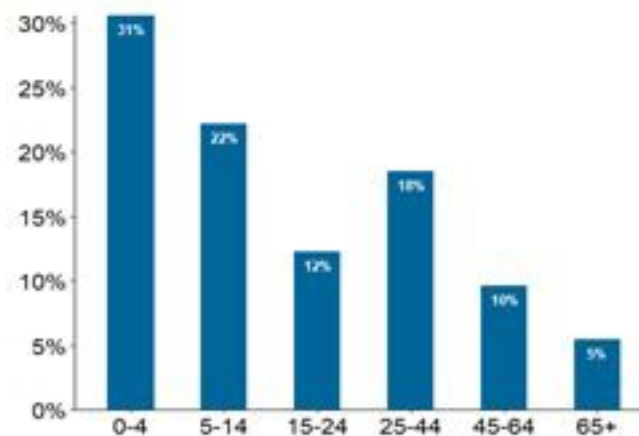
By Hospital Admission  
(suspected and confirmed)



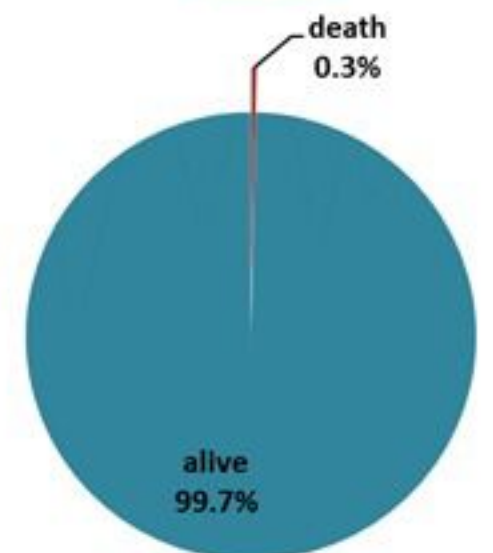
By locality (confirmed cases)



By age group  
(suspected and confirmed cases)



By Outcome  
(suspected and confirmed)

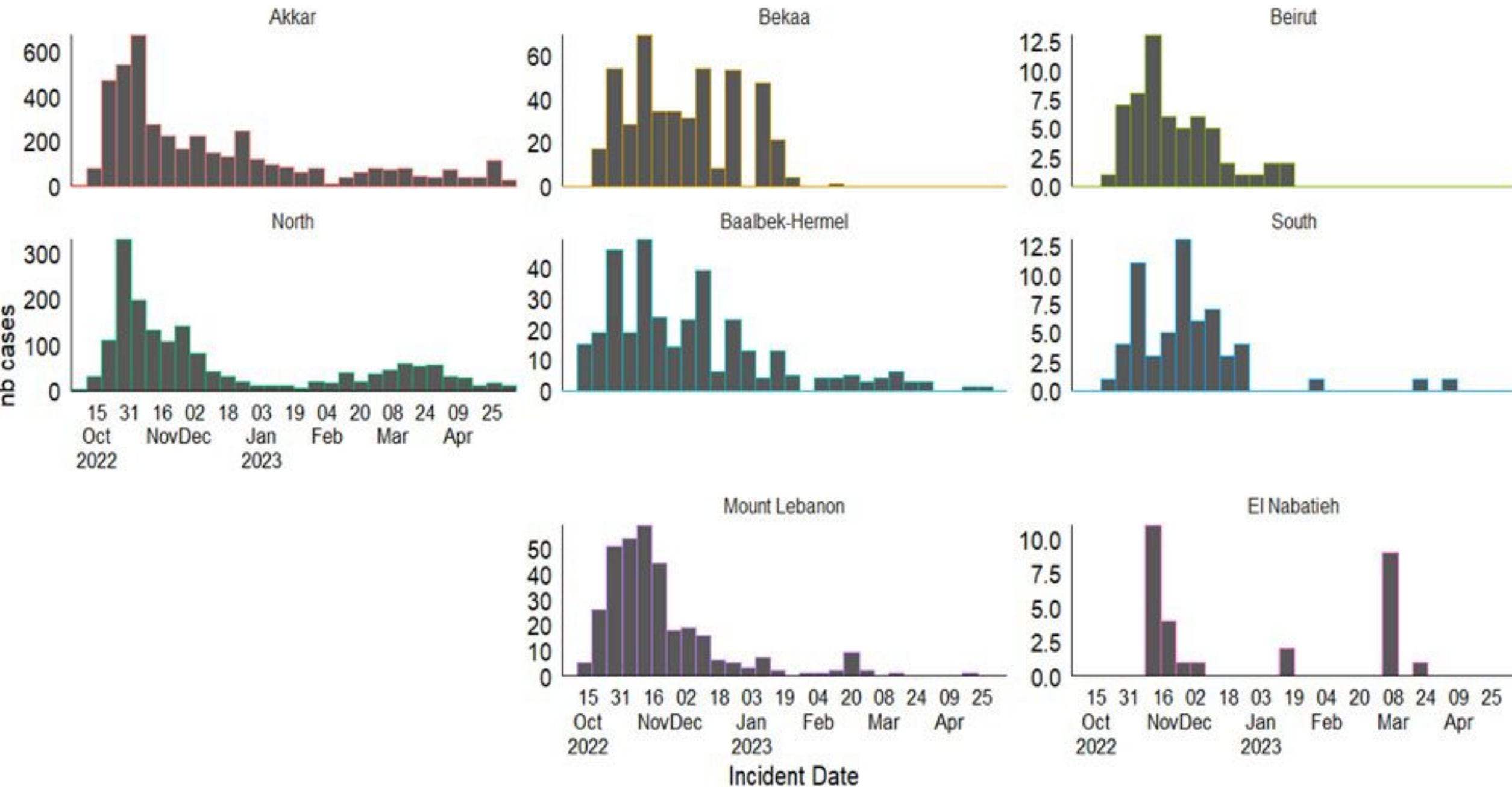




# Cholera Surveillance Report

## 3 May 2023

Epicurves by date of reporting by province  
(suspected and confirmed)

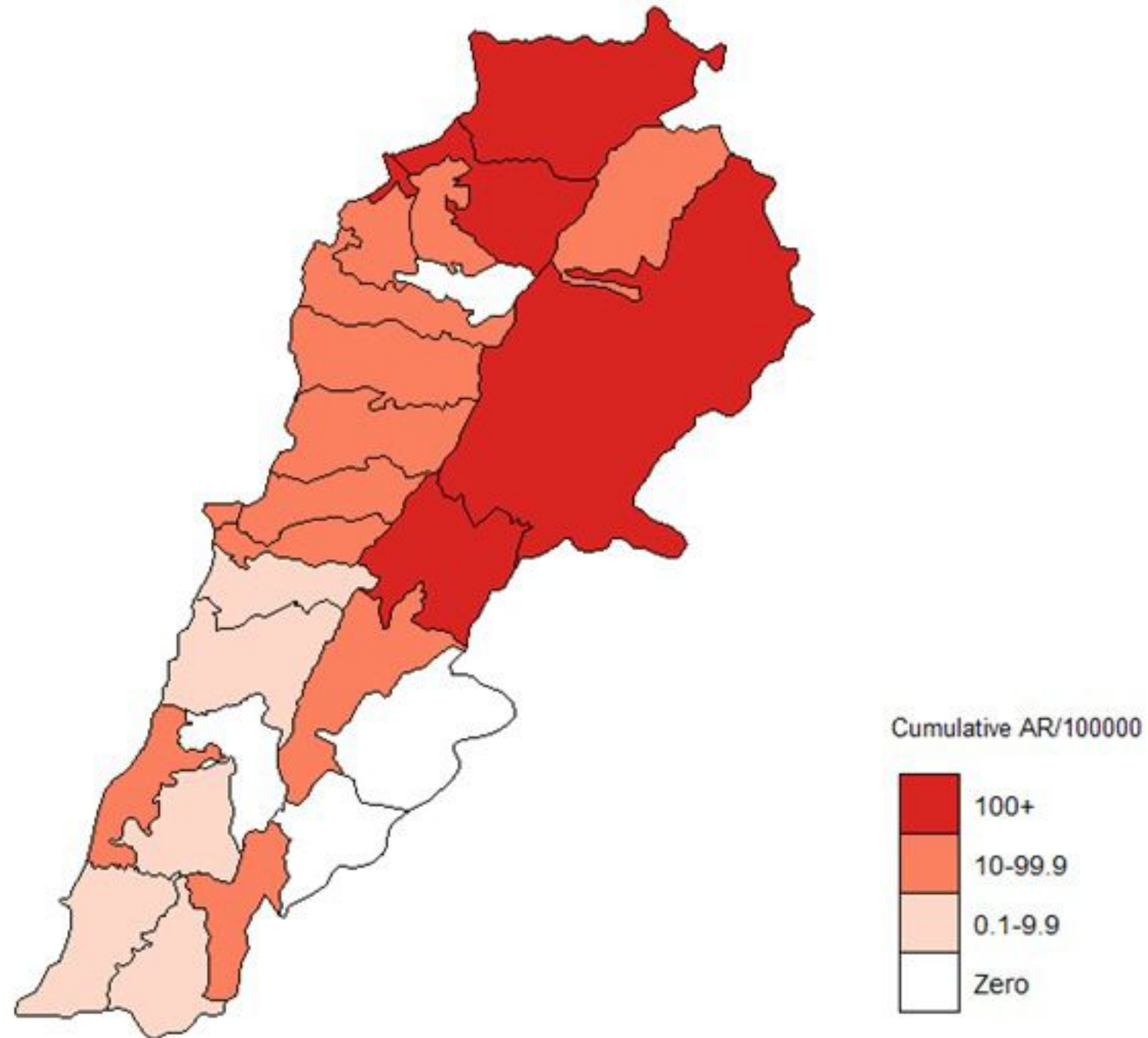


# Cholera Surveillance Update

## 3 May 2023

Cumulative Attack Rate per 100,000 (suspected and confirmed)

نسبة الحدوث التراكمية لكل مئة الف نسمة (الحالات المشتبهه والمثبتة)



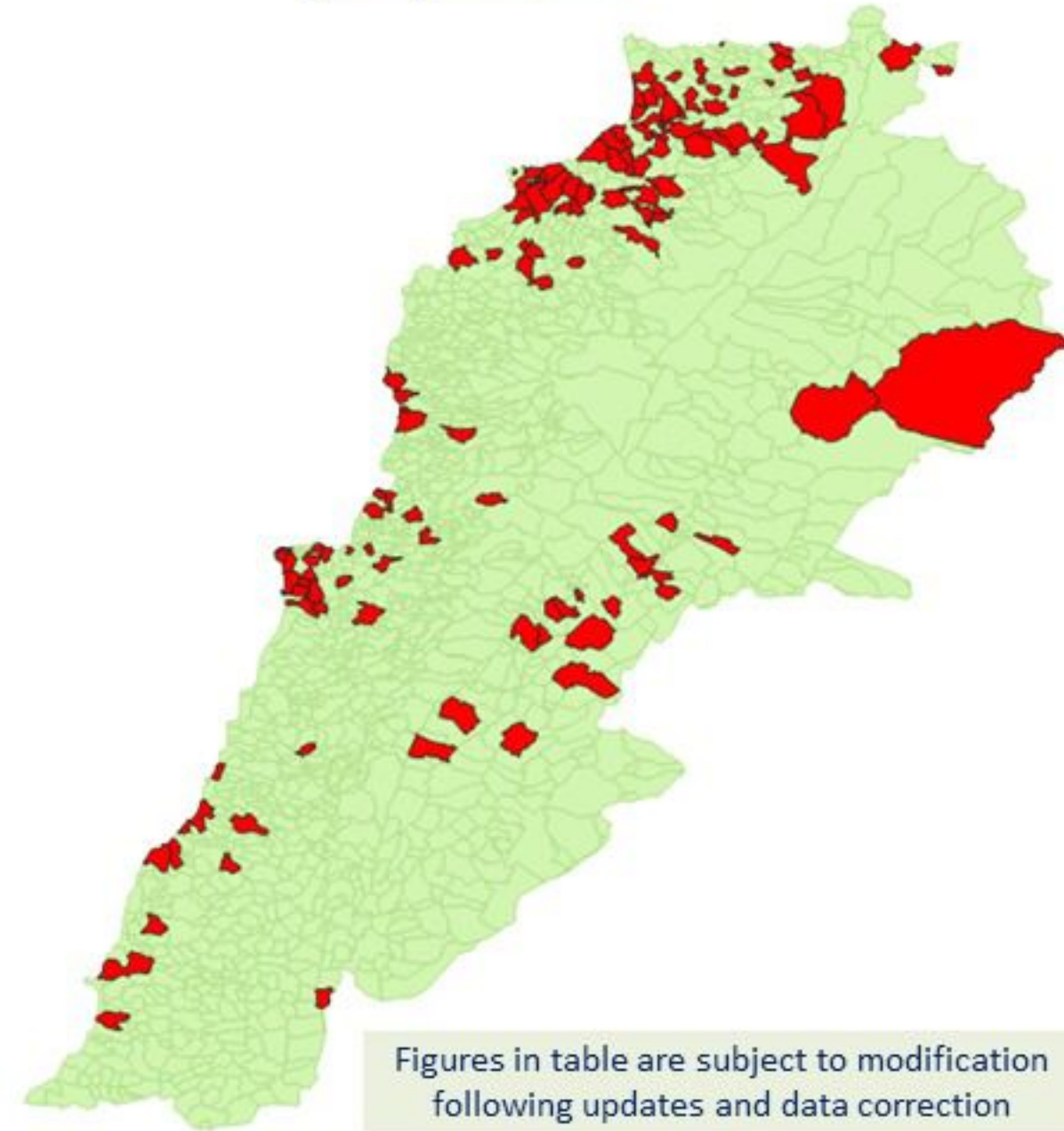


# Cholera Surveillance Update

## 3 May 2023

5

By locality (confirmed)  
حسب البلدة (المتبئة)



Figures in table are subject to modification following updates and data correction

Case	Locality	Cases	Case	Locality	Cases
Akkar	Akkar Atika	1	Kiswan	Aintouna	1
	Amayer/Duadi Khaled	1		Balfounh	1
	Arqa / Marlayet Haddara	1		Bzaytuta	7
	Bebnine / Baddoua	16		Ghazi	2
	Beit Hajj/Koucha/Khrebit Jindi	1		Jounieh Ghadir	4
	Bergayel	1		Jounieh Sabra	4
	Bezbina	1		Yahchouch	1
	Bireh	1		Zouk Mosbeh	3
	Bqerzla	1	Kouza	Aaba	1
	Cheikh Ayache / Chir Hmairine	1		Aahdiq	1
	Dahr Qambar /Hokr Qatteh	1		Bana	1
	Dabadeb	1		Baama	1
	Dinbou	1		Dahr Ain / Ras Masqou	1
	Fneydek	1		Rachdibbine	1
	Halba	1		Kfar Aqa	1
	Hayssa	1	Marjoun	Aedayssoh	1
	Hoeuich	1	Mtin	Biklaya	1
	Jdeidat Qaytee	1		Broummiana	1
	Kfar Harra	1		Bsalim	1
	Kfar Melki	1		Deouna/Borj Hammoud	2
	Khane Hayat	1		Mansouriah	3
	Khirbet Char	1		Zalqa	1
	Kneisset Hnaldor	1	Miniah Damieh	Aadoua	1
	Kouachra	1		Assoun	4
	Koulikhat	1		Ain B Tineh	1
	Machha	1		Bahsa	1
	Majdala	1		Bakhawoun	4
	Memneaa	1		Bhanina / Zouk Bhanina	7
	Mhamarah / Nahr Bared / Abdeh	22		Bammal	6
	Minlara	1		Douniya	1
	Mqyatea	1		Kfar Chellane	2
	Quadi Jamous	11		Kfar Habrou	1
	Qaabrine / Tal Hayat	1		Mokubia	2
	Qbalyat	1		Miniah	18
	Qlayat Akkar	1		Quadiyeh	1
	Qobet Chamra	17		Qattine	3
	Rahbeh	1		Rihaniah	35
	Ransiyeh / Deir Dalloum	1		Sir Damieh	5
	Saadine	1	Saida	Aerqoun	1
	Tell Abbas Charqui	1		Bissatiyeh	4
	Tleil	1		Ghaziyah	2
	Zouq Haddara	1		Khanayeb	3
	Zouq Hosnieh	1		Saida	1
Aley	Aley	1		Sealand	1
	Hay Selloum/Chouifat	1	Sour	Abbasiyeh	1
Baabda	Ain Roummaneh	1		Deir Qanoun Ain	4
	Borj Brajneh	1		Baddawi	16
	Ghbayreh/Chiyah/Sabra	1		Mina	7
	Hadath	1		Qobbah	21
	Haret Hreik	1	Tripoli	Tripoli Bab Raml	1
	Kfar Chima	1		Tripoli Gardana	2
	Mrejjih	1		Tripoli Hadjadin	1
Baalbeck	Arsal	27		Tripoli Nour	1
	Kfar Dabache	1		Tripoli Souayza / Jinnin	3
	Khodr	1		Tripoli Tabbaneh	21
	Temnine Faouqa	1		Tripoli Zaitoun	15
	Temnine Tahta	1	West Beqaa	Kamel Inouz	1
	Younine	1		Kulaya	1
Batroun	Chikka	1		Saghibine	1
Beirut	Achrafieh	1	Zahleh	Auli Nahri	2
	Ain Miralssch	1		Bar Elias	2
	Hamra	1		Dalhassieh	2
	Mdsour / Mar Mikhael	1		Harouch Mandra	1
	Msaitbeh	1		Hawch Omara	7
Chouf	Zaarouriyeh	1		Majdal Anjar	1
Jbeil	Amchit	1		Qob Elias	9
	Ehmej	1		Raait	11
	Fidar	1		Saadnayil	11
	Halate	1		Taalabaya	2
	Jbeil	1		Zahleh Madaka	2
	Mastita	1	Zghorta	Aalma	1
				Andeh	1
				Kfar Dhaqous	2
				Najdalya Zghorta	7
				Miriata / Faour	3
				Sabwal	1
				Zghorta	5